

Surface Raceway and Lighting Systems

Electrical Raceway

Series 800 Surface Raceway and Lighting Systems

Superstrut® channel together with snap-in closure strip is listed by Underwriters Laboratories as a surface metal raceway. Other accessories listed by Underwriters Laboratories are identified on the drawings.

Electrical Applications

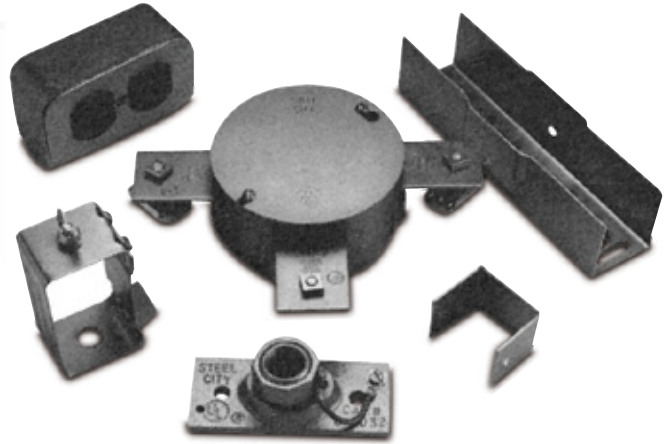
Column A

Suitable for number of wires indicated when used as a raceway. Also suitable for number of wires indicated when installed to support and supply electric discharge type fixtures when raceway wiring is suitable for not less than 75° C.

Column B

Suitable for number of wires indicated when used as a raceway. Also suitable for number of wires indicated when installed to support electric discharge type fixtures when clearance of not less than 1/8" is provided between raceway and fixture and when wiring is suitable for 75° C.

GoldGalv® hardware finish is standard for all Superstrut® products. This is a multi-process finish of electro-plated zinc, followed by gold-colored trivalent chromium coating to give excellent corrosion resistance and a superior paint base. See **pages B-106-B-107** for a complete description of the GoldGalv® hardware finish. GoldGalv® hardware finish will be furnished if no other finish is specified.



Materials:

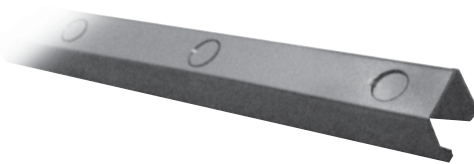
Superstrut® electrical raceway, fixture hanging channel, closure strip and accessories are cold formed from hot-rolled strip steel.

Design Data:

Deflections at various hanger rod spacings for raceway channels, based on 40 to 45 lbs. per fixture.

UL LISTED CHANNELS

A-1200	B-1200
A-1200-KO	B1200AL
A-1200 AL	B-1400
A-1200 PG	C-1200
A-1400	E-1200
A-1400-KO	H-1200
A-1400 SS	



CHANNEL	DEFLECTION AT		
	AT 10 FT.	12 FT.	AT 14 FT.
A-1200	1/4"	1/2"	3/4"
C-1200	3/8"	3/4"	*
A-1400	3/8"	3/4"	*

CHANNEL	DEFLECTION CHANNEL AT 7 FT.		
	AT 6 FT.	AT 7 FT.	AT 9 FT.
B-1200	3/8"	9/16"	5/8"
B-1400	1"	1/2"	*

*Not recommended for this spacing

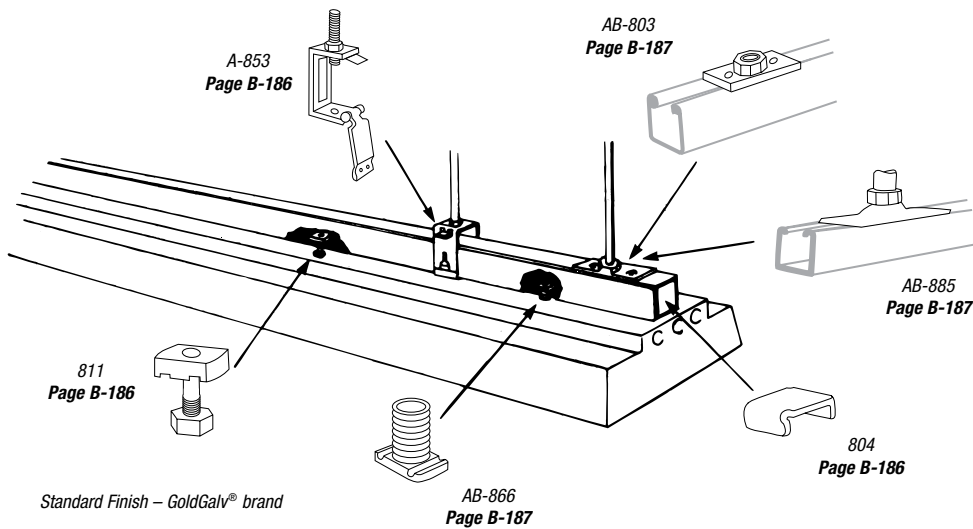
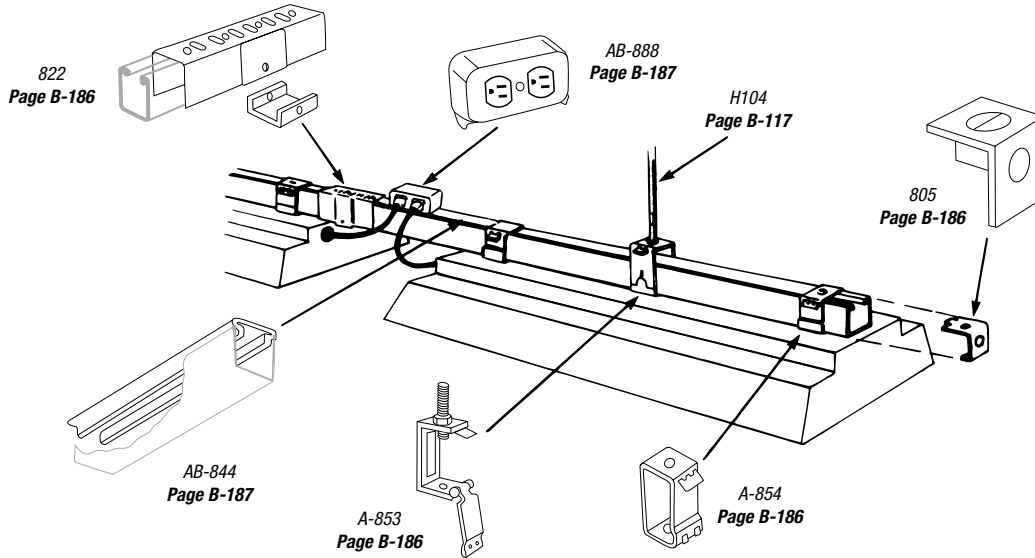
Maximum Number of Wires

AVG	RACEWAY WITH OR WITHOUT KO							
	A-1200 A-1400		B-1200 B-1400		C-1200		E-1200 H-1200	
	A	B	A	B	A	B	A	B
14	6	10	4	6	5	10	6	10
12	6	10	3	6	4	10	6	10
10	5	8	—	—	4	6	5	8
8	4	6	—	—	3	4	4	6
6	2	3	—	—	2	2	2	3

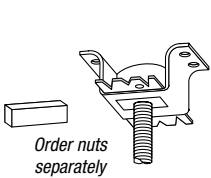
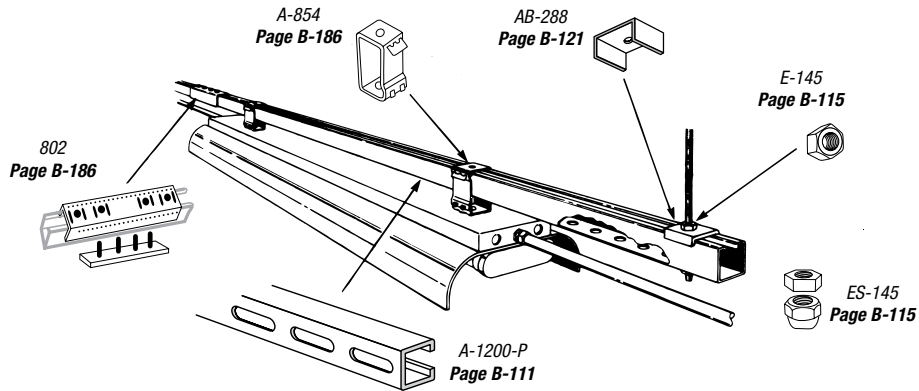
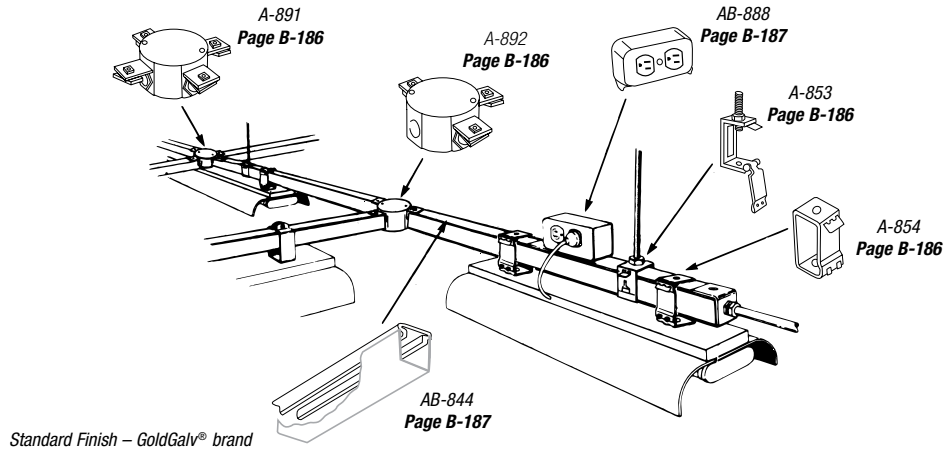
Surface Raceway and Lighting Systems

Electrical Applications (continued)

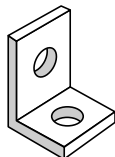
Metal Framing & Cable Tray — Superstrut® Metal Framing System



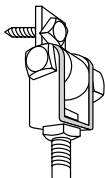
Surface Raceway and Lighting Systems



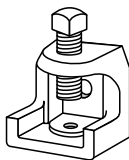
452TB
Concrete Spot Insert
Page B-127



540
Side Beam
Hanger Clip
Page B-130



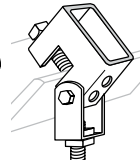
S-541
Swing Connector
Page B-131



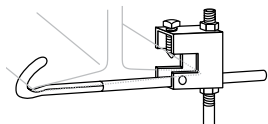
500
Beam Clamp
Page B-130



U-579
Ceiling Flange
Page B-50



US-563
Beam Clamp
Page B-130



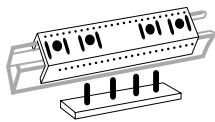
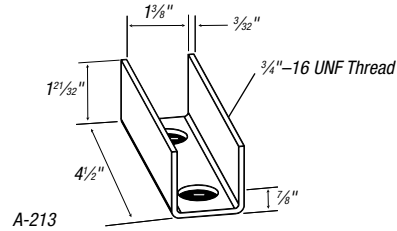
U-569
Beam Clamp
with Safety Rod
Page B-133

Surface Raceway and Lighting Systems

Fixture Fittings

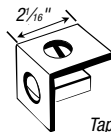


A-243-1
End Cap for A-1200 Channel



802
Raceway Joiner with Reinforcing Plate
furnished complete with nuts.

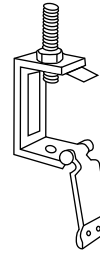
CAT. NO.	FOR CHANNEL	STD. CTN.
A802	A Series	25
B-802	B Series	25
E-802	E Series	10
H-802	H Series	10



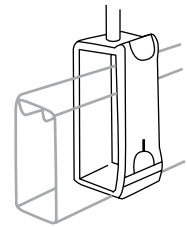
809
Tapped End Cap

12 ga for 3/4" or 1" Conduit.
Furnished complete with 1/4" x 5/8"
Flat Head Machine Screw and
AB-100-1/4 nut.

CAT. NO.	FOR CHANNEL	STD. CTN.
A-809	A Series	25
H-809	H Series	25



A853
Channel Hanger
Use hanger rod 3/8" or 1/2".
Use with "A", "B" or "C" series
single channel.

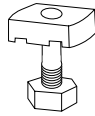


A853L
Channel Hanger
Long type for all
series channel.



804
End Cap

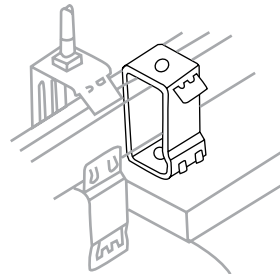
CAT. NO.	FOR CHANNEL	STD. CTN.
A804	A-1200	25
	A-1400	25
B804	B-1400	25
C-804	C-1200	25
E-804	E-1200	25
H-804	H-1200	25



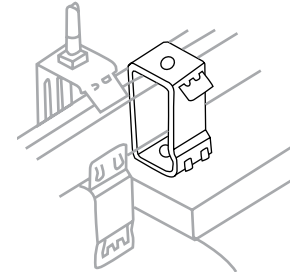
811
Stud Nut

For attaching fixture to Slot Down
Channel or to Slot up Knockouts.
Specific length. Hex Nut included.

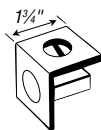
CAT. NO.	FOR CHANNEL	STD. CTN.
811 1-STR	1/4 x 1	50
811-2STR	1/4 x 1 1/4	50



A854
Channel Hanger
Illustration showing A-854 with nut and bolt
furnished to attach to fluorescent fixture.
Use with "A", "B" or "C" series channel.



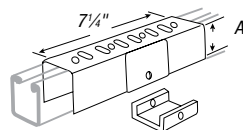
A854L
Channel Hanger
Long Illustration showing A-854-L
with nut and bolt furnished to attach
to fluorescent fixture. Long
type for all series channel.



805
End Cap with Knockout

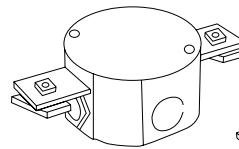
KO for 1/2" conduit. Furnished
complete with 1/4" x 5/8" flat Head
Machine Screw and AB-100-1/4 nut.

CAT. NO.	FOR CHANNEL	STD. CTN.
A-805	A Series	25
H-805	H Series	25

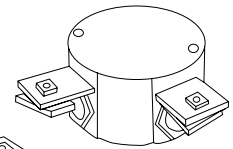


822
Raceway Joiner & Seal

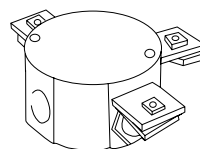
CAT. NO.	A (IN.)	FOR CHANNEL	STD. CTN.
A822*	1 1/16	A Series	25
B-822*	7/8	B Series	25
C-822*	1 1/16	C Series	25



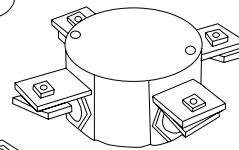
A889*



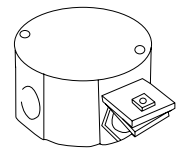
A890*



A892*



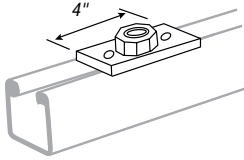
A891*



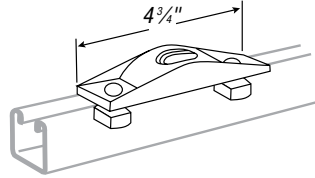
A893



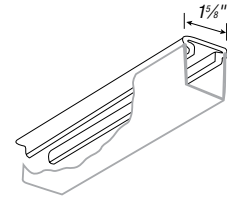
Surface Raceway and Lighting Systems



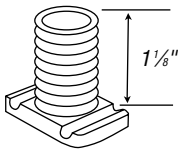
AB803*
Cast Conduit Connector
To connect 1/2" or 3/4" conduit to raceway channel — Furnished complete with stud nuts & hex nuts. Part has removable bushing to increase size from 1/2" to 3/4".



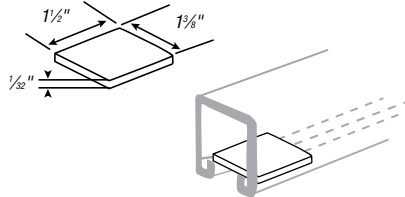
AB815
Swing Connector
Nuts & bolts to clamp to channel included. For 1/2" or 3/4" conduit.



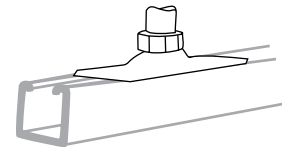
AB-844* Steel Closure Strip
AB-844-PC* Plastic Closure Strip
When used as a raceway channel, it is normally installed with the slot up and after wiring is complete, the closure strip is installed. For all channels. Standard lengths 10 ft.



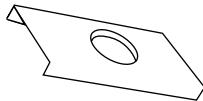
AB-866
1/2" Pipe thread



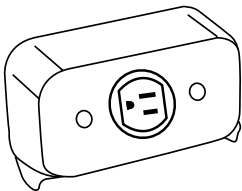
AB868
Fiber Retainer for cables
until closure strip is installed.



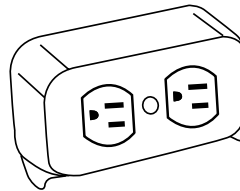
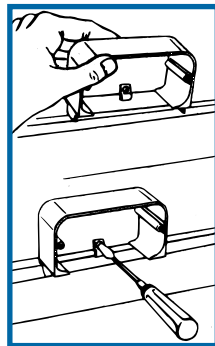
AB885
15° Swivel
Nuts and bolts to clamp to channel included. For 1/2" or 3/4" conduit.



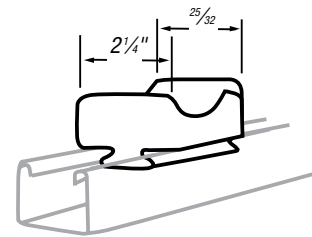
AB867*
Spacer Clevis
For use with AB-866 wiring stud nuts.



AB887*
Single Outlet
Complete unit including housing, standard SINGLE 3-wire, 15 Amp, 125 Volt, NEMA ground receptacle and cover plate.



AB888*
Duplex Outlet
Complete unit including housing, standard DUPLEX 3-wire, 15 Amp, 125 Volt, NEMA ground receptacle and cover plate.



AB-880 **AB-881**
3" and 4" Porcelain Saddles

CAT. NO.	MAX. CABLE DIAM. (IN.)	STD. CTN.
AB-880	3	3
AB-881	4	4½